

CNI Iwi Holdings Limited

Ngātahi

Pānui tuatahi

*Mana whenua,
Mana tāngata,
Mana te ao tūroa.*



Tēnā Koutou Katoa.

Homai he wai hei horoi i onamata, he kāretu hei whakareka i inamata, he hongī he mihi atu i anamata; Tihei mauri ora.

E ngā mana, e ngā reo, e ngā whakataukī a ngā mātua tipuna; kia ora rawa atu koutou katoa. Tēnei te ngākau koa me te manawa reka e tuku atu nei kia koutou i tēnei ko te pānui tuatahi mē kī a Te kete rokiroki ā ngā iwi o te ngākau o te ika: arā – Central North Island Iwi Holdings Limited (CNIHL).

Nō reira, e rere rā taupae atu e taku manu kōrero; tuia te whenua kia rākai, ruia te kupu kia awe te weri, huia te tangata kia ngātahi.

Ka huri
Matthew Te Pou
Chairman

CNIHL Contact Details

Board of Directors

The Board of Directors for CNI Iwi Holdings Ltd is (in no particular order):

Rawiri Te Whare
Te Pumautanga O Te Arawa

Eru George
Te Pumautanga O Te Arawa

Chris McKenzie *Raukawa Settlement Trust*

Andrew Paul *Raukawa Settlement Trust*

Maramena Vercoe
Te Rūnanga O Ngāti Manawa Trust

Bill Bird *Te Rūnanga O Ngāti Manawa Trust*

James Carlson
Te Rūnanga O Ngāti Whare Trust

Bronco (David) Carson
Te Rūnanga O Ngāti Whare Trust

Tupara Morrison
Te Komiti Nui O Ngāti Whakaue Trust

Jason Rogers
Te Komiti Nui O Ngāti Whakaue Trust

Ngairē George *Tuwaharetoa Settlement Trust*

Henare Johns *Tuwaharetoa Settlement Trust*

Graham Pryor *Te Mana O Ngāti Rangitahi*

Kenneth Raureti *Te Mana O Ngāti Rangitahi*

Tamati Kruger *Tūhoe Settlement Trust*

Matt Te Pou *Tūhoe Settlement Trust*

Willie Te Aho (*alternate Director*)
Te Pumautanga O Te Arawa

Roger Pikia (*alternate Director*)
Te Pumautanga O Te Arawa

Crown Observer

Paul Jackson

Chairperson

The current elected Chairperson is Matt Te Pou of Tūhoe Settlement Trust.

Staff

Glenn Cash *Administrator*
Alisa Dhanjee *Administration Assistant*
Sarah Asher *Mana Whenua Project Manager*

We have a small office in Rotorua which is open from 9am to 3pm Monday to Friday. You can contact us on:

Phone 07 343 7969

Fax 07 343 7970

Email: adhanjee_cnihl@xtra.co.nz or

gcash_cnihl@xtra.co.nz or

Glenn's mobile phone 027 249 3133

Talking to CNI Iwi Collective representatives has revealed that they would like regular and consistent information sharing through the CNI Iwi Holdings Ltd office on the mana whenua and land management workstreams. Iwi have also said they want to be kept abreast of the decisions made by the CNIHL Board of Directors in their governance role.

The CNIHL pānui and website are designed to support and enhance the effectiveness of the land manager and the mana whenua project manager.

Frequency of Pānui

The idea of a regular, structured pānui was approved by the Board of Directors at the CNIHL Board meeting held on 25 February 2010. Pānui will follow the Board meetings. So, the planned release dates for CNIHL Pānui for the next twelve months are:

Board Meeting dates	Pānui release dates
June 2010	July 2010
September 2010	October 2010
December 2010	December 2010
March 2011	April 2011
May 2011	June 2011
September 2011	October 2011

Content

1. Information and updates about the mana whenua process and land management work will be a regular feature of the CNIHL pānui, eg.
2. A small feature article in each publication gives CNI Collective iwi a chance to share their own news with the wider Collective. This month Te Rūnanga O Ngāti Manawa share their strategic goals with us.
3. Information about annual rentals to be received and distributed will feature in the July 2010 pānui also.
4. Details of the financial planning and operational budget for FY10/11 will also be included in the July issue, as CNIHL fiscal year runs from July to June.
5. We would love feedback from Collective iwi as to what other information you would like to see included or explored in the regular pānui, and also what content or connections you would like on the CNIHL website.

CNI Iwi Collective

In June 2008 the Central North Island Iwi Collective signed a final settlement with the Crown. On 1 July 2009 the whenua and accumulated rentals were transferred to the CNI Iwi Holdings Trust for the benefit of all Collective members; Ngāi Tūhoe, Ngāti Manawa, Ngāti Rangitihī, Ngāti Tūwharetoa, Ngāti Whakauae, Ngāti Whare, Raukawa, and the affiliate group Te Pumautanga O Te Arawa.



The Collective's intention is to continue working together to make the most of our shared whāinga and tikanga, and the combined strength that has made the Collective a force to be reckoned with and respected.

As a whole, the Collective has over 100,000 members who live in their traditional rohe in the CNI, around New Zealand, and around the world.

Iwi PSGEs

Each iwi in the Collective needs to have an organisation in place to receive its share of the settlement assets. These organisations are called post settlement governance entities (PSGEs). Ultimately these PSGEs will decide how to invest or use their share of the settlement assets – and whether or not to participate in Collective commercial activities. The Collective's job is to ensure that iwi have the option to participate if they choose to, both now and in the future.



Settlement Package

Under the CNI Forests Collective Settlement, members of the Collective received:

1. 90% by value of the 176,000 hectares of Crown forest lands in the Central North Island. Currently that land is rented out to commercial businesses, under agreements called Crown Forest Licences (CFLs). The vast majority of the settlement land is part of Kaingaroa Forest;
 2. All of the licence rentals accumulated on the settlement lands since 1990;
- The settlement also includes;
- 3 million NZUs or 'carbon credits' under the NZ Emissions Trading Scheme; and
 - Preferential rights to buy certain Crown properties (RFR and DSP mechanisms).

CNI Iwi Holdings Limited

The purpose of CNI Iwi Holdings Ltd is to act as Trustee for the CNI Iwi Holdings Trust. The Board of Directors and staff are entrusted with receiving, distributing and safeguarding the assets of the Collective in accordance with the deed of settlement and deed of trust. The key functions of CNI Iwi Holdings Limited are:

- To receive the settlement assets;
- To distribute the settlement assets and any ongoing revenue from those assets (including ongoing licence fees paid under the CFLs); and
- To safeguard the land and ensure that it is never put at risk.

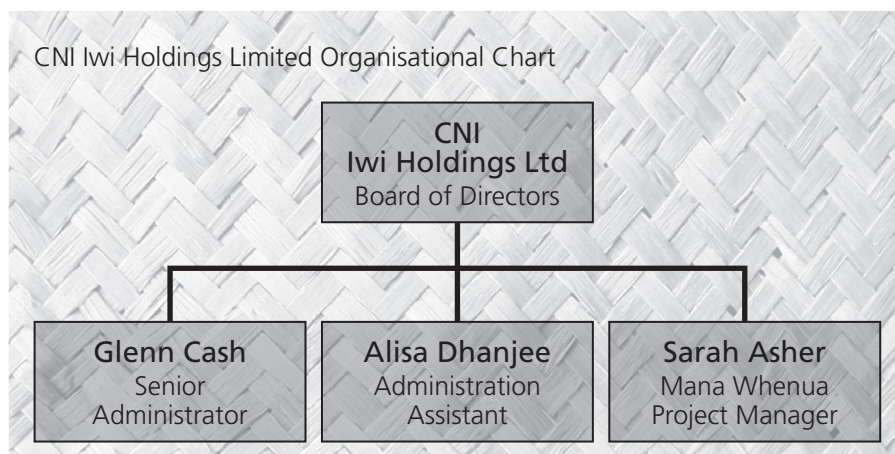
The eight iwi PSGEs are all equal shareholders with two Directors appointed for each of the eight iwi. The other shareholder is the Crown. The Crown has observer status at Board meetings but is not entitled to vote.

The Crown's shareholding is to protect the claims of iwi outside the Collective who have unsettled interests in the CNI Crown forest lands.

CNI IHL will also oversee the Mana Whenua process, which will reach agreement on the mana whenua interests of each iwi.

It is important to note that as a trust holding entity, CNI IHL is not a commercial company and has no commercial functions. It is run according to a Trust Deed and Shareholders Agreement, and is governed by a Board of Directors.

CNI Iwi Holdings Limited Organisational Chart



Mana Whenua

A unique feature of the CNI Forests Collective Settlement was the agreement that iwi themselves, rather than the Crown, would decide which areas of the returned land rightfully belong to each iwi. The land has been transferred as a whole to CNIHL, which will then carry out the two year process of identifying, discussing and eventually agreeing the respective mana whenua interests. This is known as the mana whenua process.

The mana whenua process takes place officially between 1 July 2009 and 30 June 2011. The overall approach for the mana whenua process was designed by the Collective during the settlement negotiation process, and is specified in the CNI Forests Collective Settlement Act 2008. However the details of how the mana whenua process will work in practice are now being decided by iwi. The importance of undertaking the process in the spirit of whānaungatanga, manaakitanga and kōtahitanga can not be overemphasized.



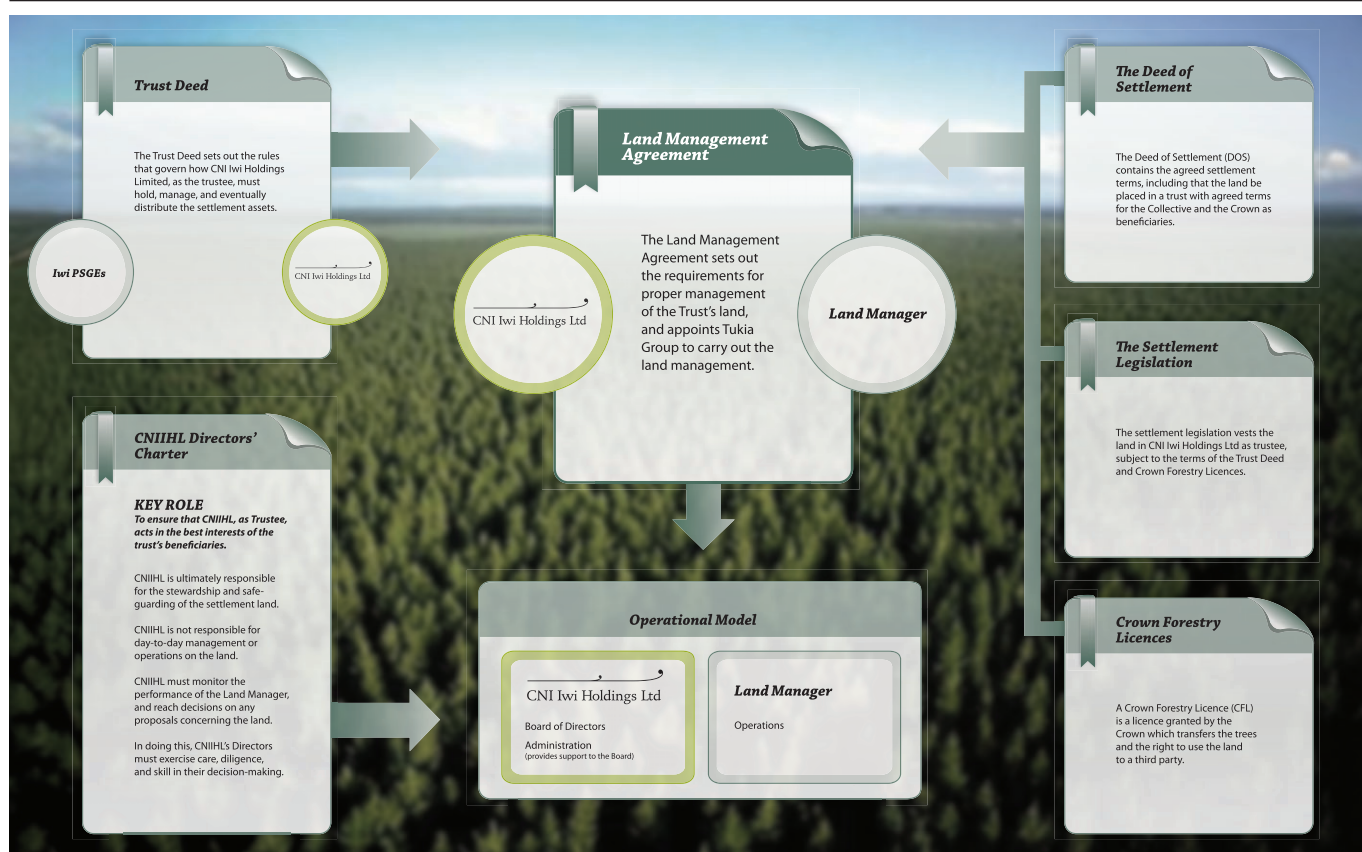
Kia kōtahi anō o tātou whakaaro, kei a tātou te mana (let our thoughts be one – our mana vests in us as a Collective).

The mana whenua process will be monitored by CNIHL. It has the following three main stages, which flow towards a Final Allocation Agreement:

Stage 1: Identification of mana whenua interests – July 2009 to September 2009 (now complete);

Stage 2: Kanohi ki te kanohi Negotiation – October 2009 to June 2010 – now underway; and

Stage 3: Dispute Resolution – July 2010 to June 2011 (if necessary).



The key role of CNIHL's Directors is to ensure that CNIHL, as Trustee, acts in the best interests of the trusts beneficiaries. By entering into the Land Management Agreement with Tukia Group, CNIHL has delegated the day-to-day management and operations in relation to the land. However CNIHL is still ultimately responsible for the stewardship and safe-guarding of the land and must monitor the performance of Tukia Group as Land Manager, and in accordance with CNIHL's legal obligations.

Mana whenua, mana tāngata, mana te ao tūroa. Regain the land, empower the people, build the future.

IWI PROFILE

Te Rūnanga O Ngāti Manawa

Tū Oho Rere

Tawhiuau te Maunga
Rangitaiki te Awa
Rangipo te wehenga o te Tuna
Ngāti Manawa te Iwi
Tangiharuru te Tangata



Tēnā koutou katoa e noho mai na i ngā topito o te whenua
Tino mihi nui kia koutou katoa.

Te Rūnanga o Ngāti Manawa's Strategic Plan 2009-2012 identifies the following long term goals:

- growth of Ngāti Manawa's economy through investments;
- fostering business growth;
- education to equip iwi members to take full advantage of changes;
- health improvements to provide better and more enjoyable lives; and
- support for marae and cultural activities that contribute to a stronger understanding, identity and pride among Ngā Uri in their Ngāti Manawatanga.

He aha te mea nui o te ao?

He Tangata, He Tangata, He Tangata

As the above proverb describes, Ngāti Manawa is focused on seeing to the well being of our people which in turn is intimately linked to the well being of our environment.

There are our challenges and there is the future of our coming generations.

Acknowledgments

CNIHL would like to thank C4 for the awesome collaboration and expertise to develop this pānui. Ka nui te mihi kia koe e Gary.

cniwiholdingsltd.co.nz

A website is being developed to enable all the Collective's beneficiaries access to the most up to date and accurate information about what is happening.

The website will offer:

- Historical facts about the Collective's journey to settlement;
- Work Plan for CNI Iwi Holdings Limited;
- CFL Rental income latest figures;
- Mana Whenua updates;
- Contact details of the central office of CNI Iwi Holdings Ltd;
- Ongoing opportunity to provide feedback to the Trust holding company;
- Stories from iwi about what they are doing and how;
- Update on the non-Collective iwi activity regarding CNI Crown forest lands; and
- Links to all PSGE websites.

Watch this space! Website launch planned for June 2010.